

## 2025 CHAPTER SPONSORS

Volume 26, Issue 03

On behalf of the West Coast Florida Board of Directors, we would like to thank our Chapter Annual Sponsors listed below. These companies help sustain our chapter. We encourage you to support the sponsors and their products below in your specifications.

### PLATINUM



### GOLD



### SILVER



### BRONZE



# President's Message



**Curtis Ray, Jr., CPD, FASPE**

November already, it seems as I get older the days pass quicker.

I am happy to announce we have 2 new board members, Gisun Sung as our Chapter Woman of ASPE Liaison and Hernan Garcia as our Chapter Affiliate Liaison.

November & December is a time to give back, this year we are collecting donations for Daystar Life, located in St. Petersburg. Daystar Life educates and empowers our community members to fight nutritional insecurity and financial instability by creating opportunities that lead to self-sufficiency. Daystar Life was founded in 1982 as an outreach ministry of Saint Mary Our Lady of Grace Catholic Church in St. Petersburg, FL., originally named Daystar Life Center. Since 1982, Daystar has been dedicated to illuminating the lives of our community members by providing essential resources and compassionate assistance. Daystar Life is driven by the belief that every individual deserves dignity, respect, and a chance at a brighter tomorrow. Their mission is to extend a helping hand to those in need, offering a wide array of services designed to address the immediate challenges and empower individuals on their journey towards self-sufficiency

So please either bring gift cards to our November or December meeting or go to the link below do donate.



<https://square.link/u/lm3RtMbl>

See you at the next meeting.

A handwritten signature in black ink, appearing to read 'Curtis Ray'.

Curtis Ray, CPD, FASPE

# V.P. Technical



Todd Rebhahn, CPD

## NOVEMBER'S TECHNICAL MEETING

**Tuesday, November 11, 2025**

**Location: Sheraton Tampa Brandon Hotel  
10221 Princess Palm Avenue, Tampa, FL 33610**

### **CAST IRON VE CONSIDERATIONS**

Sheraton Tampa Brandon Hotel  
10221 Princess Palm Ave, Tampa, FL 33610

4:30-5:30pm Happy Hour & Tabletop Presentation  
5:30-6:00pm Business Meeting  
6:00-6:30 Dinner  
6:30-7:30pm Technical Presentation

**Register on our website:**

<https://wcf-aspe.com/meetinginfo.php>

\$35.00 Pre-registration (on or before noon on Friday before our Tuesday technical session)

\$45.00 Late registration (after noon on the Friday before our Tuesday technical session or at the door)

---

**Presenter: Hari Patel – Tech Services Regional Manager – McWane Plumbing**

Hari began his career with a degree in Mechanical Engineering from The Pennsylvania State University. With several years of experience spanning industries such as aerospace, building materials, HVAC, and plumbing, he brings a broad and versatile technical background to his role. Currently, Hari serves as the Northeast Technical Services Regional Manager at McWane Plumbing Group. He is also an active member of the ASPE chapters in Boston, New York, Philadelphia, Baltimore, and Washington, D.C., as well as an engaged participant in AYP. Through his role at McWane Plumbing Group, Hari is passionate about building strong relationships with engineers and contractors alike, working collaboratively to advance the development of safe, efficient, and reliable plumbing infrastructure.

---

**Description:**

This presentation examines the practical and technical considerations design engineers should evaluate before accepting a value engineering (VE) proposal to substitute cast iron plumbing systems with PVC. While PVC can appear cost-effective as a material, this session explores factors that are often overlooked, including installation complexity, soil and bedding requirements, hanger spacing, firestopping, and code compliance. Through real-world examples and cost analyses, attendees will learn how these factors can impact system performance, safety, and long-term value. The goal is to equip engineers with the knowledge to critically evaluate VE proposals and understand the implications of material selection.



## HOLIDAY DONATION DRIVE

Please join us this year for our holiday drive to be held in November and December. At our dinner meetings on November 11th and December 9th we will be collecting nonperishable food products. In addition, between November 11th and December 16th we will be collecting monetary donations.

If you are unable to attend the meeting, you can participate by using the QR Code below to make a monetary donation. All proceeds benefit Daystar Life Center.

The West Coast Florida Board thanks you in advance and wishes you a safe and healthy season.





**Plumbing | Waterworks | Architectural  
Fire Protection | Irrigation | HVAC Products**

**BRITEK**  
AQUADESIGN  
Behavioral Health Fixtures & Solid Surface & Stainless Steel Commercial Lavatories

**BLUE RIBBON**  
Gauges, Thermometers, Pressure Transmitters & Level Sensing Equipment

**BONOMI**  
NORTH AMERICA  
Industrial & Commercial Valves, Solenoids, Limit Switches, Positioners & Accessories

**CHROMALOX**  
Advanced Thermal Technologies  
Heat Trace & Freeze Protection

**ELKAY**  
Sinks, Faucets, Bottle Filling Stations, & Drinking Fountains

**frio**  
Next Generation of Heat Trace Controllers

**GPK**  
PRODUCTS, INC.  
Molded & Fabricated PVC Fittings

**Great Bay Products, Inc.**  
Pipe Protection & Testing Products

**greenturtle**  
Interceptors

**Guardian**  
Emergency Eyewash & Shower Equipment

**HALO**  
WATER SYSTEMS  
Filtration, Purification, Sterilization & Conditioning Systems

**Halsey Taylor**  
Bottle Filling Stations & Drinking Fountains

**HAWK PLASTICS**  
SDR35 & Heavy Wall SDR26 Sewer Pipe, Schedule 40 PVC, & Plastic Perforated Pipe

**HOMESTEAD VALVE**  
Industrial Plug & Butterfly Valves

**HUNTINGTON BRASS**  
Finished Plumbing, Kitchen & Bathroom

**INDIANA SEAL**  
A GPK PRODUCTS Company  
Molded & Fabricated PVC Fittings

**Intellihot**  
Gas & Electric Water Heaters

**ISOMET**  
Classroom, Laboratory & Mechanical Safety Systems

**JONES STEPHENS**  
Rough-In Valves, Tools, Toilet Seats, Kitchen & Bath Accessories & Gas Pipe & Fittings

**Just manufacturing**  
Stainless Steel & Washing Stations & Systems

**KITZ**  
KITZ CORPORATION OF AMERICA  
Commercial Valves

**Kohler Water Treatment**  
Water Filtration & Softener Systems

**MAPA PRODUCTS**  
Roof Top Pipe Supports, Pedestal Hydrants, Utility Pedestals

**MEDLOK**  
Rapidly Designed Medical Gas Fittings from 304L  
Medical Gas Fittings & Valves

**Metcraft**  
Stainless Steel Plumbing Products, Commercial, Industrial, Correctional, Hospital & Schools

**MSI**  
Industrial & Commercial Fittings, Nipples & Valves

**neoLogic solutions**  
Filters & Filter Housings

**NEOPERL**  
Aerators, Flow Regulators, Check Valves & Hoses

**NIAGARA**  
Innovative, Ultra High-Efficient Toilets

**PLUMBEREX**  
Under Sink Protective / Safety Covers (ADA Compliant)

**Pure Lead Products**  
Lead Flashings

**QuantumFlo**  
Domestic Water Booster Pumps

**RECTORSEAL**  
Chemical Solvents, Plumbing Specialties, MetaCaulk

**ROBAR**  
Cast & fabricated fittings for municipal distribution of water & wastewater.

**STEP-KO PRODUCTS**  
Industrial & Commercial Corrosion Protective Products, Flange Protection, Flange Isolation Gasket Kits & U-bolts

**T&C TOWN & COUNTRY PLASTICS**  
Custom Engineered Tanks & Systems for Pollution Control, Storage & Drainage

**INDUSTRIAL TOPP**  
Sump & Sewage Basins, Lids & Covers

**TURBOTORCH**  
Air-Fuel Products & Accessories

**WADE**  
Commercial Drainage Products

**WCC**  
Water Treatment Systems

**WEIL Pump**  
A WEIL BRAND  
Hot Water Recirc, Elevator Pumps, Sump Pumps, Lift Stations & Fire Pumps

**WILKINS**  
RPV, Backflow & Fire Protection



Specification Drainage, Trench Drainage, Light Commercial Products, Commercial Brass, Interceptors & Pex

**Tampa**  
Office & Warehouse  
8973 Palm River Road  
Tampa, FL 33619  
Phone: (813) 621-0700

**Orlando**  
Office & Warehouse  
3702 Mercy Star Ct Suite 100  
Orlando, FL 32808  
Phone: (407) 208-2888

**East Orlando**  
Office & Training Center  
12301 Lake Underhill Rd Suite 237  
Orlando, FL 32828  
Phone: (813) 906-6766

**Pompano**  
Office & Warehouse  
2551 NE 4<sup>th</sup> Avenue  
Pompano Beach, FL 33064  
Phone: (954) 688-3086



## WILSON & GIRGENTI



### Delivering quality design engineering and consulting services

STRUCTURAL | MECHANICAL | ELECTRICAL | PLUMBING | FIRE PROTECTION

- | Design/Build Consulting Services
- | Structural Repair Design
- | TEKLA Building Information Management
- | Steel Fabrication and Shop Drawing Review
- | Threshold Inspections
- | LEED Consulting and Design
- | Due Diligence Inspections
- | Smoke Control System Inspections
- | System Trouble Shooting
- | Equipment Replacement Reports
- | Energy Consultations
- | Energy Star Studies and Certifications
- | Feasibility Studies
- | Fire Sprinkler Hydraulic Calculations

#### Contact us:

**Main office:** 813.855.3330  
**Email:** [info@wilsongirgenti.com](mailto:info@wilsongirgenti.com)

**President:** Joseph Girgenti, PE  
[Jgirgenti@wilsongirgenti.com](mailto:Jgirgenti@wilsongirgenti.com)

**Vice President:** Brock Shrader, PE  
[Bshrader@wilsongirgenti.com](mailto:Bshrader@wilsongirgenti.com)

**SERVING MARKETS NATIONWIDE**  
OFFICES IN TAMPA, ORLANDO,  
JACKSONVILLE, SOUTH FLORIDA,  
NASHVILLE AND AUSTIN.



For more information, go to  
**WorkwithWG.com**

CHAPTER SPONSOR  
PLATINUM  
LEVEL

# V.P. Membership



**Brian Carrier**

## Join ASPE! Benefits Include...

- [Plumbing Engineering & Design Handbook of Tables App](#)
- [20% off First-time ICC memberships](#) (sign-in required)
- ASPE *Plumbing Engineering Design Handbooks*
- ASPE *Connect online community*
- Biweekly ASPE [Pipeline](#) e-newsletter
- Members-only ASPE.org access (includes access to ASPE *PEDH* chapters)
- Publication and education program discounts
- ASPE Biennial [Convention and Engineered Plumbing Exposition](#) (even years)
- ASPE Biennial [Technical Symposium](#) (odd years)
- ASPE [Emerging Technology Symposium](#)
- Technical seminars and [workshops](#) (sign-in required)
- Access to earn [continuing education units](#) (CEUs)
- Technical [books and manuals](#) specific to the profession of plumbing engineering
- Professional certification / recertification
- Continuing education opportunities
- Alfred Steele [Scholarship Program](#)
- Local chapter affiliation
- Monthly chapter meetings and technical seminar opportunities
- Networking opportunities with plumbing engineers worldwide
- Leadership opportunities (national and chapter boards of directors and committees)

## More Reasons to Belong to ASPE...

- Professional isolation leads to stagnation
- Build a better résumé
- Be a leader
- Be a mentor
- Enhance your network and make new friends
- Take your profession and career seriously
- Broaden your knowledge
- Give back to your profession and the community
- Stay current with changing standards and technologies

We again appreciate all our West Coast Florida ASPE members for this new ASPE year. We will continue the new year strong and moving forward through the end of the 2026 West Coast ASPE year. At the end of October we have 84 active members.

### The birthdays for November are as follows:

Corey Anderson, CFPS, CPD	11/01
Craig Boyce, CPD	11/01
Brian Carrier	11/04
Shawn Jeffrey, LEED AP	11/12
Nicholas Davis	11/25

### The anniversaries for November are as follows:

Dominic Cacolici, P.E.	23 Years
Tim Collins, CPD	26 Years
Nicholas Davis	1 Year
Richard B Little Jr.	18 Years
James Lentine	7 Years
Immanuel Jimenez	10 Years
Rich Grimes	32 Years
Warren Hahn, P.E.	7 Years

Brian S. Carrier  
 Vice President Membership  
 West Coast Florida Chapter

Connected in quality.

# SAFE, CONSISTENT CONNECTIONS

WITH VIEGA® PRESS TECHNOLOGY

For more information call: Jorge Megias, Technical Sales Manager, Florida Region  
407.242.0132 | [jorge.megias@viega.us](mailto:jorge.megias@viega.us)



**SCAN**  
WITH PHONE  
TO LEARN MORE



CHAPTER SPONSOR  
**GOLD LEVEL**

# V.P. Education



**Matthew Walker, P.E.**

## November 2025 Newsletter Education Announcements

ASPE's November Book of the Month is *Illustrated Plumbing Codes Design Handbook* (eBook)

- Through **November 30, 2025**, you can purchase this eBook for **35% off** the regular member price. Just enter coupon code **givethanks** when you check out. The discount is valid on the digital edition of this publication and the coupon code can only be used once. If you are purchasing multiple items the discount will be applied only to the assigned publication.

### 1) Fall MedGas Workshop

- November 13-16 (Thur. To Sun.) 8-5 PM each day.**
- Live, in-person event at ASPE HQ in Rosemont (Chicago), IL.
  - 32-hour workshop is based on the parameters outlined in ASSE 6060: Medical Gas Systems Designer, a new professional qualification standard that sets forth the training requirements for designers who wish to earn the ASSE 6060 personnel certification. 1.2 CEU upon completion.
- If/when your AHJ adopts 2024 NFPA 99, you must have ASSE 6060 certification OR a party deemed technically competent through other qualification(s) deemed sufficient by the health care facility's governing body.
- ASPE Members \$2,000; Non-members \$2,350

### 2) MedGas Basics

- ASPE Education website, On-demand
  - Following the success of the in-person and online MedGas Workshop and continuing to fulfill the commitment to training the next generation of medical gas system designers, ASPE is pleased to announce the new MedGas Basics course. The course contains four (4) instructional videos that you can review at your leisure, and each offer 0.1 CEU upon completion.
- Bundle Price for ASPE Members \$150 or each individual class \$50 (save \$50 when you bundle!)

### 3) AYP Region 5 – Project Management 201

- Live Webinar (1 hr) – November 12 at 1 PM (EST)**
- This intermediate-level session builds on the fundamentals introduced in Introduction to Project Management for Engineers, shifting focus to the business side of project delivery. Attendees will explore how to respond to RFPs, develop competitive fees, budget project hours, and manage scope and services through construction administration. The presentation emphasizes the “business” of managing projects.
- 0.1 CEU
- Free for ASPE members!

### 4) WOA Webinar – Transforming Aging in Place to Aging with Grace in the Kitchen and Bath

- Live Webinar (2 hrs) – November 21 at 1 PM (EST)**
- Part 1: discusses the dangers of the typical home of aging people or those with mobility or other challenges. It discusses solutions to safety and accessibility issues, based on both the 7 Principles of Universal Design, as well as ADA standards. It also demonstrates to architects the benefits of creating a home that is safe and accessible for people of all generations. And it shows how professionals who are savvy in this topic can engage in a prosperous older economy.
- Part 2: This presentation will define Universal Design and explore specific products available in the market to suit a variety of needs and add value to the home.
- 0.1 CEU per part (session).
- Free for ASPE members!

# V.P. Education



**Matthew Walker, P.E.**

- 5) As always you can find more ASPE educational information at <https://education.aspe.org/>
  - a) Read, Learn, Earn
    - **November 2025** is *Cross Connection Control* (0.1 CEU)
    - October 2025 was *Plumbing Fixtures* (0.1 CEU)
  - b) On-demand list is continuously updated with many options to choose!
- 6) 2026 CPDT Exam
  - a) Dates TBD; anticipated for Fall 2026 (October??)
  - b) Must fill out eligibility form to receive a link to register for exam.
  - c) Remote Proctored Exam
  - d) 3.5 hours, 100-question multiple-choice answer
  - e) ASPE Members \$225; Non-members \$450
- 7) 2026 CPD Exam
  - a) Dates just announced! April 13-24, 2026
  - b) Must fill out eligibility form to receive a link to register for exam.
  - c) Remote Proctored Exam
  - d) 3.5 hours, 100-question multiple-choice answer
  - e) APSE Members \$450; Non-members \$675
- 8) GPD Program (Exam)
  - a) On-Demand course completion followed by examination; however, must be completed within 6 months of start date.
  - b) Open-note, 2 hours, 50-question multiple-choice answer.
  - c) 75% is passing score.
  - d) 1.2 CEU credits.
  - e) ASPE Members \$500; Non-members \$600
  - f) Note: Professional Engineers (PE) are eligible to take the GPD Program without having to take the CPD Exam as a prerequisite.

Please reach out to me for any additional questions regarding ASPE Education.

Regards,

Matthew Walker, PE  
Vice President, Education  
Mobile: 336.972.6126  
Email: [vpeducation@wcf-aspe.com](mailto:vpeducation@wcf-aspe.com)



SERVING THE  
SOUTHEAST  
SINCE 1967

**HEADQUARTERS:**  
6000 PARK OF COMMERCE BLVD,  
BOCA RATON, FL 33487

**TAMPA BRANCH:**  
6306 BENJAMIN ROAD SUITE 614  
TAMPA, FL 33634

EMAIL: SALES@CARRCOMPANY.COM

PHONE: 800-578-2277

FAX: 561-997-2633

/COMPANY/THE-CARR-COMPANY

/CARRCOMPANYFLORIDA

\* STOCKED IN BOCA RATON

\*\* STOCKED IN TAMPA



Brands include **Aquatic, Aker, Bootz, Hamilton, Maax & Swan.**



Full line of commercial stainless steel sinks including hand and scullery.



RPZ, dual check, atmospheric vacuum breakers and Y-strainer backflow prevention.\*



Full line of residential and commercial gas & electric water heaters.\*



Supply stops, risers, fittings, connectors and service parts.



Luxury fittings brand with artfully crafted designs available exclusively in showrooms.



Faucets and related products that are designed to transform people's daily lives through water with purposeful innovation.



Line of tools and accessories including **Irwin** and **Lenox.**



Pipe support systems: hangers, clamps, strut and fittings.\*



Sewer, drain and waste, flexible couplings and light duty trenchdrain products.\*



Line of luxury sinks and accessories to include **KWC, Franke, and Kindred.**



Propane and natural gas corrugated stainless steel gas piping for commercial and residential applications.\*



Elastomeric and polyethylene insulations, tapes and adhesives.\*



PVC 40 & 80, molded ftgs, large diameter ftgs, PVC DWV & ABS ftgs, CTS CPVC ftgs, CPVC 80 ftgs.



Residential and commercial bath accessories.



Industry brushes, twisted and wired brushes, abrasives, PTFE thread sealants, hand tools and accessories.



Handcrafted products from natural and sustainable materials for the kitchen and bath.



Faucets, shower heads and accessories that are an affordable solution for home remodeling & multi-family projects.



Linear and center point drains.



The world's largest producer of plumbing products, toilets, washlets, lavs and flush valves.



Market leader in piping systems to include Type A PEX.



Brands include **Woodford** and **Watco.**\*\*



Grinder, sewage pumps and packings.\*

CHAPTER SPONSOR  
SILVER  
LEVEL



# HARRY WARREN, INC

"Proudly Representing Quality Manufacturers Since 1968"



## Who We Are

Harry Warren, Inc. is a leading manufacturers' representative company specializing in plumbing and mechanical products across Florida. Family owned for over 50 years, we've upheld the values of hard work, honesty, and integrity established by our founder, Harry Warren, and carried on today by the second and third generations.



## Why Choose Us

- Extensive Manufacturer Network
- Multi-Channel Sales Expertise
- Superior Customer Service & Support
- Product Training & Education
- Innovative Sales Solutions
- Family Values with a Forward-Thinking Approach



(813) 622-6500



Orders@HarryWarren.com



www.HarryWarren.com

3502 Riga Blvd. Ste. E, Tampa, FL 33619-8549

CHAPTER SPONSOR  
SILVER  
LEVEL



# ENGINEER LINECARD 2025



<p>Cast Iron Soil Pipe &amp; Fittings for Drain, Waste and Vent Plumbing Systems</p>	<p>Electric &amp; Gas Water Heaters, Storage Tanks</p>	<p>Well Tanks &amp; Water Systems</p>	<p>Showers, Bases &amp; Pans</p>
<p>Circulator Pumps</p>	<p>Access Panels, Pans, Tub Protectors, Caddies</p>	<p>Balancing Valves, PRV's &amp; Backflow Preventers</p>	<p>Stud Guards, BOCA Plates, &amp; Banding Iron</p>
<p>Commercial Water Boosters</p>	<p>Commercial Water Heaters</p>	<p>Commercial Sensor Faucets &amp; Flush Valves</p>	<p>Quality Engineered Plumbing Drainage Products</p>
<p>SCH 40/80 &amp; DWV Fittings</p>	<p>Full line of Sump Pumps, Grinder Pumps &amp; Systems</p>	<p>Premier Source For Innovative Plumbing Products</p>	<p>Valves, Fittings &amp; Faucets</p>
<p>Power Tools, Hand Tools &amp; Accessories</p>	<p>Residential &amp; Commercial Water Softeners &amp; Filtration</p>	<p>Ventilation Fans</p>	<p>Universal Pipe Connectors</p>
<p>PVC Pipe 1/2"-18"</p>	<p>Control Panels, Switch Boxes, &amp; Alarm Panels</p>	<p>Fixtures &amp; Safety Equipment</p>	<p>PEX Piping &amp; Fittings Systems</p>
<p>Stainless Steel &amp; Solid Surface Plumbing Fixtures &amp; Accessories</p>			

★ STOCKED in St. Augustine Warehouse

P: (904) 827-8788  
 F: (904) 827-8795  
 orders@marshmoore.com

3380 Agricultural Center Drive  
 St. Augustine, FL 32092

www.marshmoore.com

Follow Us



CHAPTER SPONSOR  
SILVER  
LEVEL



# PHOENIX ENGINEERING GROUP

Mechanical ▲ Electrical ▲ Plumbing ▲ Fire Protection ▲ Process  
Commissioning ▲ Construction Administration

## **COMBINING KNOWLEDGE, EXCELLENCE, INTEGRITY, & EXPERIENCE**

Our mission is to develop cost-effective solutions that align with our Clients' unique business objectives. This is accomplished by investigating reasonable options to achieve the "Best Fit". We organize ourselves around our Clients' goals to become contributors to their success.

Our philosophy at Phoenix Engineering Group is to provide our Clients with professional engineering services that are affordable, innovative and appropriate. Our goal is client satisfaction achieved by ensuring that we understand the Clients' needs, wants, and concerns while providing work that is accurate, completed on schedule and within budget

Phoenix Engineering Group provides client-focused, value-oriented services, prepared with a practical appreciation of regulations, codes and modern practices. Phoenix Engineering Group's service offerings include:

- Feasibility Studies
- FDA, ISO, EU, USP and Building Code Compliance Reviews
- Basis of Design and Master Planning
- Mechanical, Electrical, Plumbing, Fire Protection and Process Engineering
- Construction and Permit Documentation
- Constructability Reviews
- Scheduling
- Construction Administration
- Field Reporting
- Commissioning
- Estimating

10012 N. Dale Mabry Hwy., Suite 102  
Tampa, FL 33618  
Phone: 813.963.0888  
Fax: 866.335.0109  
Email: [info1@phoenixeng.us](mailto:info1@phoenixeng.us)  
[www.phoenixeng.us](http://www.phoenixeng.us)

**15**  
YEARS  
EST. 2006

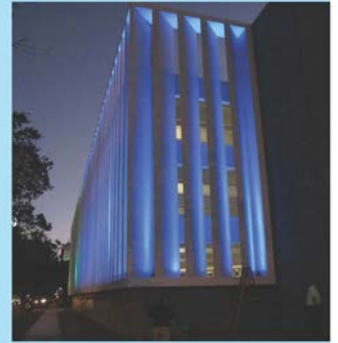
CHAPTER SPONSOR  
SILVER  
LEVEL

# VOLT AIR

**MECHANICAL / ELECTRICAL / PLUMBING / FIRE PROTECTION  
COMMUNICATIONS / TECHNOLOGY ENGINEERING  
ELECTRICAL DESIGN-BUILD CONTRACTING**

Since 2006, VoltAir has provided full Mechanical, Electrical, Plumbing, Fire Protection, Communications and Technology Engineering services. In addition, VoltAir Constructors now provides turn-key Electrical Design-Build Contracting services. We have over 40 full-time professionals on staff ready to deliver your project on time and on budget. Our primary offices (Tampa, Orlando and Houston) support satellite offices in Nashville, Atlanta, Ft. Lauderdale and Dallas.

**We will engineer your vision.**



**Tampa**  
220 West 7th Ave. Suite 210  
Tampa, FL 33602  
813.867.4899

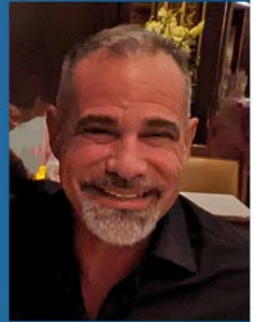
**Orlando**  
2180 Central Florida Pkwy. Suite A8  
Orlando, FL 32837  
321.622.2230

**Houston**  
5373 W. Alabama St. Suite 400  
Houston, TX 77056  
832.371.6181

[www.VoltAirInc.com](http://www.VoltAirInc.com) 1.888.891.9713

CHAPTER SPONSOR  
SILVER  
LEVEL

# Chapter Affiliate Liaison



**Hernan Garcia**

Hi everyone

I wanted to take this moment to thank everyone for the opportunity to be your Affiliate Liaison and help the chapter grow. If I haven't met you yet, I have been an active member since 2017, both APSE South Florida and West Coast Florida. I have been in the industry since 1986 as plumber, estimator, project manager, contractor and since 2016 as a manufacturer's representative for Lubrizol the inventor of CPVC. I was born and raised in South Florida and live in Davie. I am in the Tampa Bay area every second week of the month as my territory is basically I-4 South. I look forward to helping WCF continue to succeed and grow. Please feel free to reach out to me and I will try to help in any way I can.

Hernan Garcia  
affiliateliaison@wcf-aspe.com





**NOTHING PROTECTS LIKE GRAY**



Laura Loziuk  
Senior Director  
Technical Services  
609.341.6949  
laura.loziuk@mcwanepbgrp.com



**ASPE  
YOUNG  
PROFESSIONALS**

**Hey  
YOUNG  
PROFESSIONALS!**

Sponsored by:  
**PI** PEAK INDUSTRIES

**Learn more about our group!**

**ASPE Membership Value**

When you join ASPE, you become part of a worldwide family of plumbing engineering and design professionals and gain immediate access to their combined technical knowledge and industry support. ASPE members are leaders in the plumbing engineering industry, and joining their ranks offers invaluable networking and career-advancement opportunities. Our members benefit from ASPE’s international exposure, and our involvement in national and local legislative initiatives helps strongly convey the important role of plumbing engineers and designers in the construction industry.

In addition to sharing professional knowledge, ASPE members also like to have fun. Local ASPE Chapters and special-interest groups such as ASPE Young Professionals and Women of ASPE host social networking events throughout the year. With more than 6,300 ASPE members, a fellow professional is never far away.

**Advertising Rates**

Inexpensive advertising is available in the West Coast Florida newsletter. These rates are good for one year (10 issues minimum).

Rates are as follows:

Full Page	\$300.00
1/2 Page	\$175.00
1/4 Page	\$100.00
Business Card	\$75.00
Monthly Insert	\$150.00 (per issue)

Should you need more information or are interested in placing an advertisement, contact Curtis Ray at [president@wcf-aspe.com](mailto:president@wcf-aspe.com)

# 2025-2026 Chapter Board of Directors



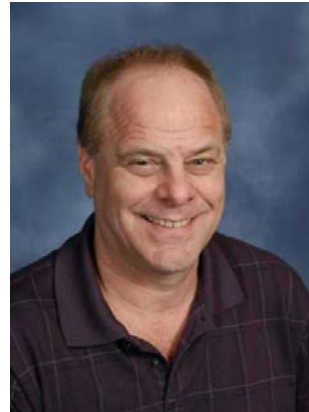
**PRESIDENT**  
Curtis Ray, Jr, CPD, FASPE  
C-(813) 477-5780  
president@wcf-aspe.com



**V.P. TECHNICAL**  
Todd Rebhahn, CPD  
Affiliated Engineers  
W-(813) 405-3827  
vptechnical@wcf-aspe.com



**V.P. LEGISLATIVE**  
Peter Pastore, III  
Harry Warren, Inc.  
C-(804) 664-5055  
vplegislative@wcf-aspe.com



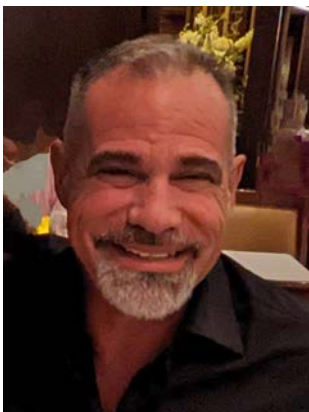
**V.P. MEMBERSHIP**  
Brian Carrier  
Brian Carrier & Associates  
W-(888) 443-4222 x101  
C-(813) 841-9146  
vpmembership@wcf-aspe.com



**TREASURER**  
Richard Little  
Carr Company  
W-(813) 901-8552  
C-(813) 781-5187  
treasurer@wcf-aspe.com



**SECRETARY**  
Scott Whitney, CPD  
Phoenix Engineering Group  
W-(813) 963-0888 ext.223  
secretary@wcf-aspe.com



**CHAPTER AFFILIATE LIAISON**  
Hernan Garcia  
Lubrizol Advanced Materials  
affiliateliasion@wcf-aspe.com



**V.P. EDUCATION,**  
Mathew Walker, P.E.  
WSP USA Buildings Inc.  
C- (336) 972-6126  
vpeducation@wcf-aspe.com

# 2025-2026 Chapter Board of Directors



**CHAPTER AYP LIAISON**

Connor Lavoy  
Power Design Engineering  
ayp@wcf-aspe.com



**CHAPTER WOA LIAISON**

Gisun Sung  
TLC Engineering Solutions  
womenliaison@wcf-aspe.com



**CHAPTER AMBASSADOR**

Tim Collins, CPD  
Wilson & Girgemti, LLC  
W-(727) 784-1472  
ambassador@wcf-aspe.com



**NEWSLETTER EDITOR**

Marcy Bartges, CPD  
ME3 Consulting Engineers  
W-(941) 748-1319 ext.105  
newsletter@wcf-aspe.com